

## ASSEMBLY INSTRUCTIONS

Thanks for purchasing your new RFM Seating chair. Here is information on how to assemble your chair the best possible way. Visit our website at [www.rfmseating.com](http://www.rfmseating.com) under our support tab for a pdf print out of this brochure.

### STEP 1. CYLINDER ASSEMBLY

- A. Place plastic can cover on top of cylinder with the larger side down.  
\*\*\*65MM AND 1101 CYLINDER DO NOT USE A COVER CAN\*\*\*
- B. Align the plastic tipped end of the cylinder with the hole in the bottom of seat control. \*\*\*REMOVE COLORED SAFETY COVER\*\*\*
- C. Using your hand, push cylinder firmly into hole. Using a hammer (Not provided), tap the end of the cylinder into the seat control.

### STEP 2. ATTACHING THE BASE

- A. With cylinder securely in place, slide base with casters onto cylinder.
- B. Using a hammer, tap base firmly around cylinder to secure in place.

### STEP 3. FOR RATCHET BACK CHAIR

- A. Slide back bar into control bar bracket.
- B. Align holes and hand tighten the 3 black bolts into the bar.
- C. Using a ½ socket or wrench (Not provided), tighten the 3 bolts to secure the back.

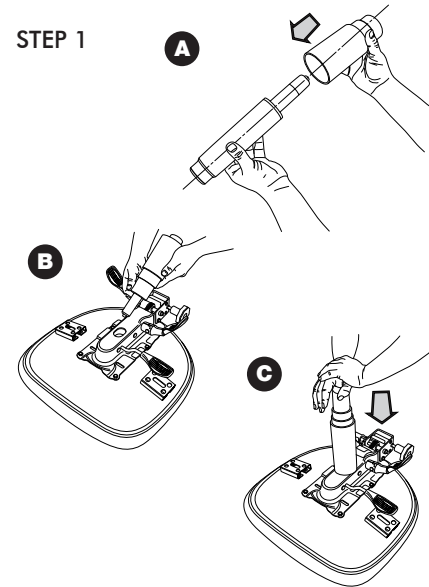
### FOR STRAIGHT BACK CHAIR

- A. Slide back bar down and into control bracket. Hand tighten knob to hold back in position.
- B. Insert small stop plug into hole near the bottom of back bar. Using a hammer, tap small stop plug firmly into the hole.

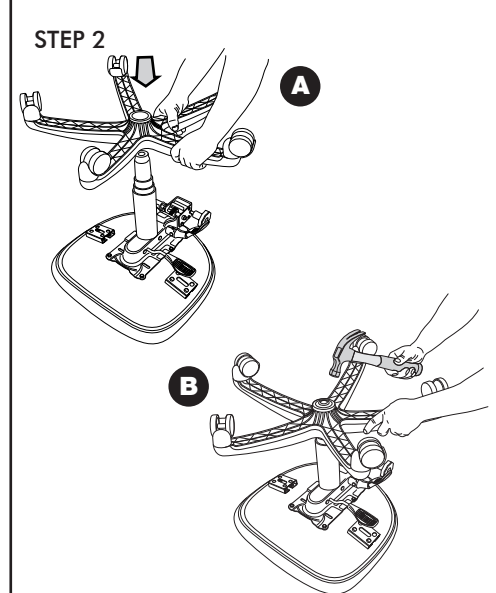
### STEP 4. ARM ATTACHMENT

- Slide the arm extension into the opening beneath the seat cushion. Line up the holes and insert knob. Turn it clockwise.

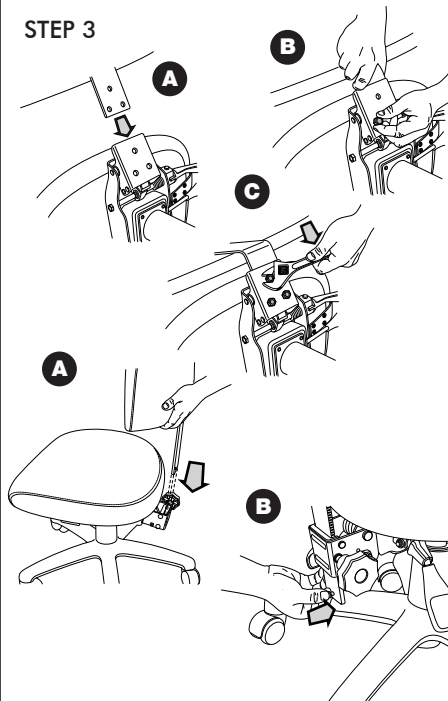
STEP 1



STEP 2



STEP 3



STEP 4

